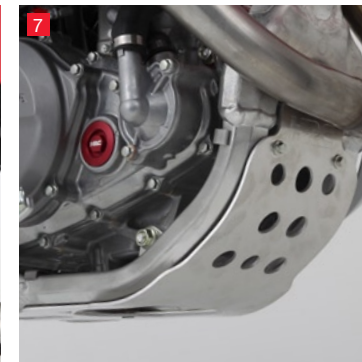


Genuine Accessories
OFF-ROAD



1 Work Mat

Made from durable polyester, this Honda Wing / HRC-branded foam padded work mat provides the perfect surface for you to work on your off-road bike.

A central anti-slip pad protects against scuff marks. Washable, and easy to store, the mat complies to environmental regulations. Dimensions: 178x130cm.

4 Magnesium ACG Cover

A lightweight Magnesium ACG Cover that is 190 grams lighter than the standard-equipment part. Coloured white with a red Honda logo to add a factory finish to your CRF250R.

5 Aluminium Clutch Cover

Give your CRF250R the factory finish with this white coated aluminium Clutch Cover featuring a red Honda logo. The three-dimensional, curved surface creates a compact feel and the tough coating makes it easier to remove scratches or wipe away stains.

2 Honda Easy Pop-up Tent

Made from U.V. resistant polyester, this flame-retardant and waterproof tent features an easily-foldable aluminium frame. The tent is branded with Honda Wing and HRC motifs, and comes in a handy, Honda-branded carrying bag. Dimensions: 3x3x3.2m
Shown with optional Side Panels.

3 Honda Easy Pop-up Tent Side Panels

Made from U.V. resistant polyester, this set of 3 flame-retardant and waterproof side panels are designed to create a sheltered working area for added protection against the elements. Branded with Honda motifs, they come in a handy Honda-branded carrying bag.

6 Colour Head Cover

Add a bit of factory bike finish to your CRF250R with this replacement red coloured Head Cover that uses the same coating as the Type R and S2000 engines.

7 Aluminium Bottom Skid Plate

An aluminium skid plate featuring the HRC logo that bolts to the underside of the frame to protect the engine crankcase from stones, and helps to slide off cased jumps.

Part No: MC-ACC-OFFROAD11
Issue Date: 05/11



The specific details of this brochure do not apply to any particular product supplied or offered for sale. Manufacturers reserve the right to vary specifications, including colours, with or without notice at such times in such manner as deemed appropriate. Major as well as minor changes may be involved. Every effort, however, is made to ensure the accuracy of the particulars contained in this brochure. Consult your dealer for details regarding the specifications of any featured product. This publication shall not constitute - under any circumstances whatsoever - an offer by the Company to any individual. All sales are made by the Distributor or Dealer subject to and with the benefit of the standard Conditions of Sale and Warranty provided by the Distributor or Dealer, copies of which may be obtained upon request. This publicity material conforms to the UK-only Trade Descriptions Act (1968). While efforts are made to ensure specification accuracy, brochures are prepared and printed several months in advance of distribution and consequently cannot always immediately reflect either changes in specification or in some isolated cases the provision of a particular feature. Customers are always advised to discuss specific details with the supplying Dealer, especially if a selection is dependent upon one of the features advertised.



Honda (UK) - Motorcycles 470 London Road, Slough, Berkshire, SL3 8QY England
Honda Contact Centre - Telephone: 0845 200 8000 www.honda.co.uk

A division of Honda Motor Europe Ltd. No. 857969 Registered in England and Wales

Please don't bin me. Pass me on to a friend or recycle me. The pulp in the manufacture of this paper is from renewable timber produced on a fully sustainable basis. The paper used in this brochure is manufactured using ECF (Elemental Chlorine Free) pulp.





CRF250R & CRF450R

PLAY DIRTY. RACE HARDER. PUSH FOR THE WIN.

It's a world of hurt for off-road machines, but the CRF250R and CRF450R are ready for the challenge. Developed over four decades on the most competitive tracks, trails and courses of the world, they deliver cutting-edge innovations and race-winning technology in rider-friendly designs. Precision engineering and low-maintenance reliability means less time in the pits and more riding time with your buddies, or dominating your competition! Make your CRF look like a factory bike with the HRC-branded range of performance and cosmetic accessories and really stand out in the paddock and on the track. Ask your dealer for advice on year model compatibility, or see our website: www.honda.co.uk/accessories

HONDA
12
MONTH
WARRANTY

Honda Genuine Accessories. Rigorously tested to ensure flawless operation, seamless fit and real-world durability. Guaranteed to provide long-lasting value with a 12 month warranty. Honda designed and engineered, **for you and your Honda.**



8 Radiator braces
Featuring the HRC logo, these strong and lightweight duralumin braces provide additional protection to the radiators from side impacts and crush damage.
For the CRF450R only.



9 Rear Master Cylinder Guard
A strong, lightweight, duralumin guard featuring the HRC logo to protect the Rear Master Cylinder.



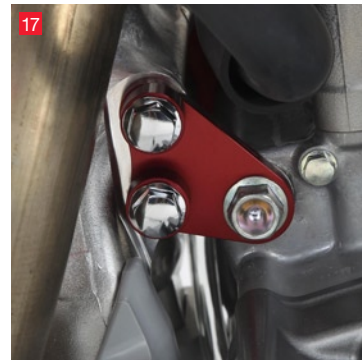
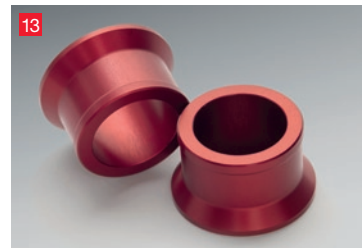
10 Triple clamp set
Replacement triple clamp that is of equivalent strength to the original but 80g lighter. Made with lightweight and tough duralumin, it features a black aluminite finish for increased durability and the HRC logo.



11 Oversized Handlebar Holder
The same design as those used on the HRC factory bikes, this Handlebar Holder allows oversized 28mm (1 1/8 inch) handlebars to fit the standard triple clamp. Featuring the HRC logo and finished in red aluminite for increased durability, the set includes chromium molybdenum steel bolts for increased rigidity.



12 Front Wheel Spacer Set
Add a factory finish to your CRF250R and CRF450R with this range of replacement parts and accessories. Made from duralumin, which is stronger and lighter than aluminium, they have a red aluminite finish for increased durability.



13 Rear Wheel Spacer Set
14 Front Brake Hose Clamber
15 Rear Brake Rod-Joint
16 Quick Adjustable Axle Blocks
17 Front Engine Hanger
18 Front Master Cylinder Cap
19 Rear Master Cylinder Cap
20 Drive Sprocket Guard (CRF450R only)
21 Engine Cover Inspection Plug Set R/L
22 Oil Filler Cap
23 Oil Level Gauge

