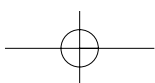
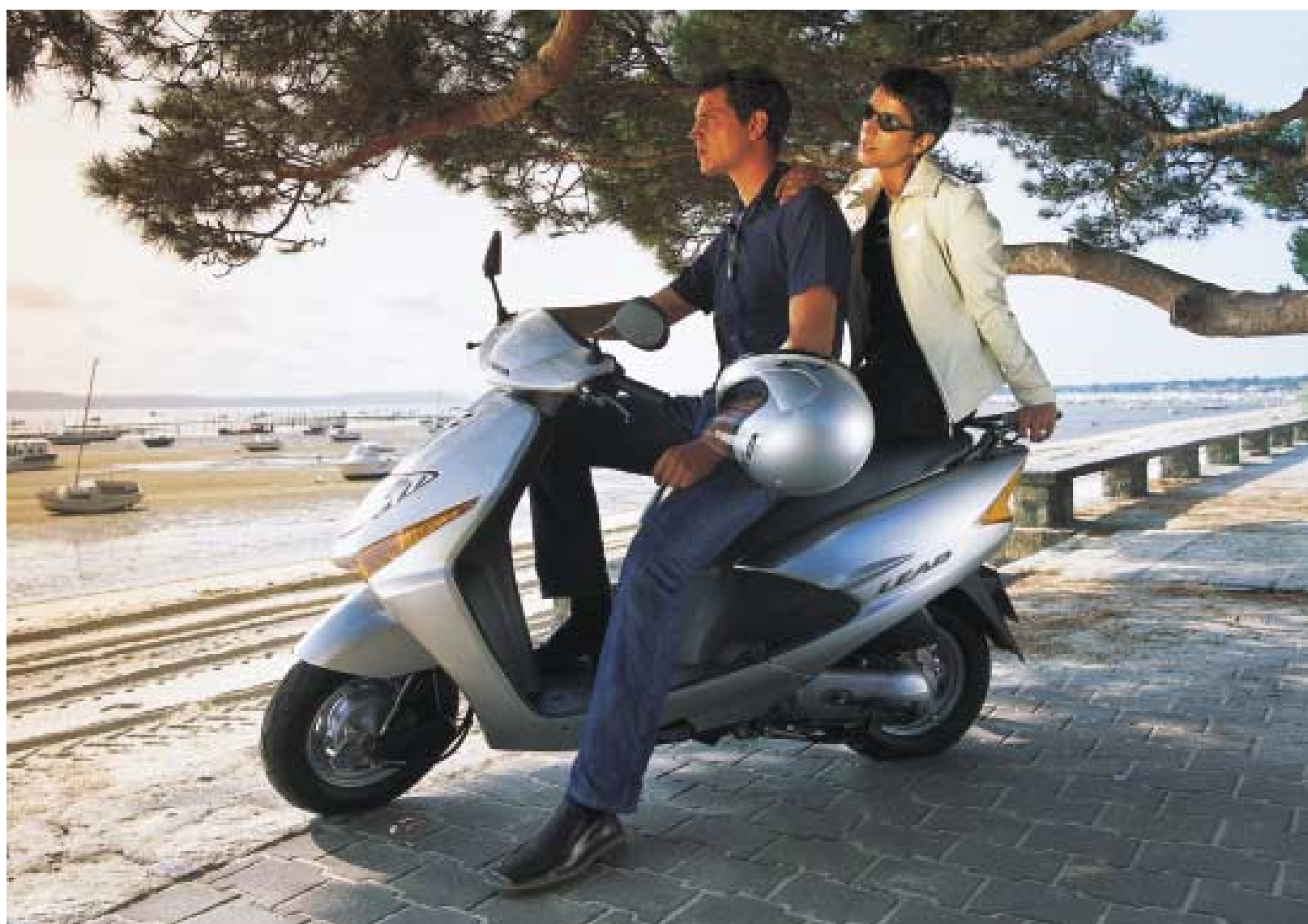
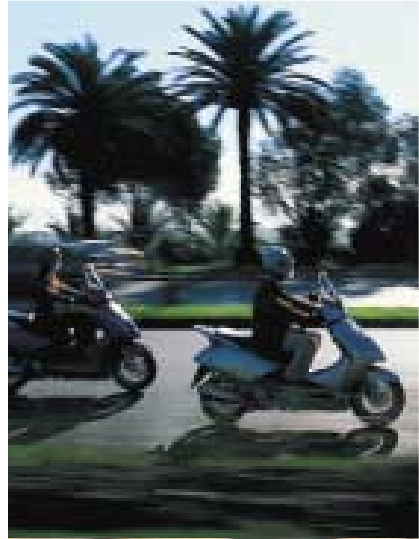


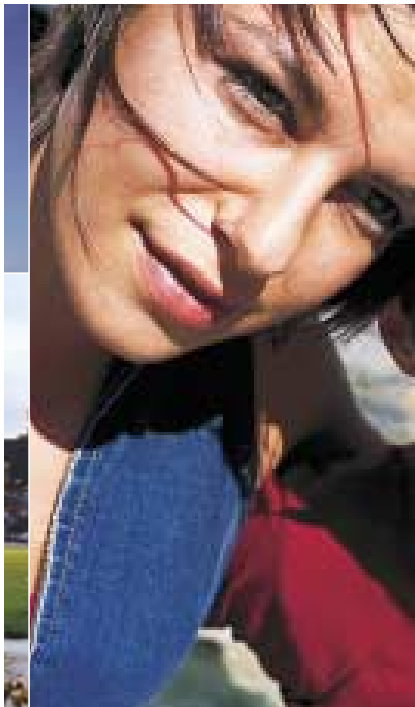
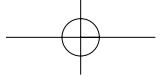
HONDA
The Power of Dreams

Scooter Range 2003

Total freedom



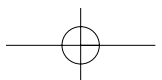


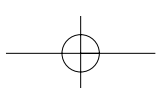
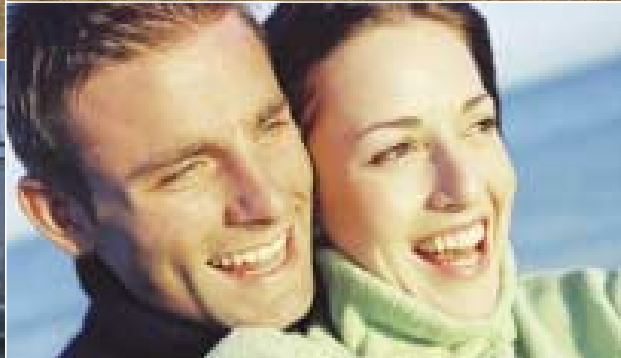
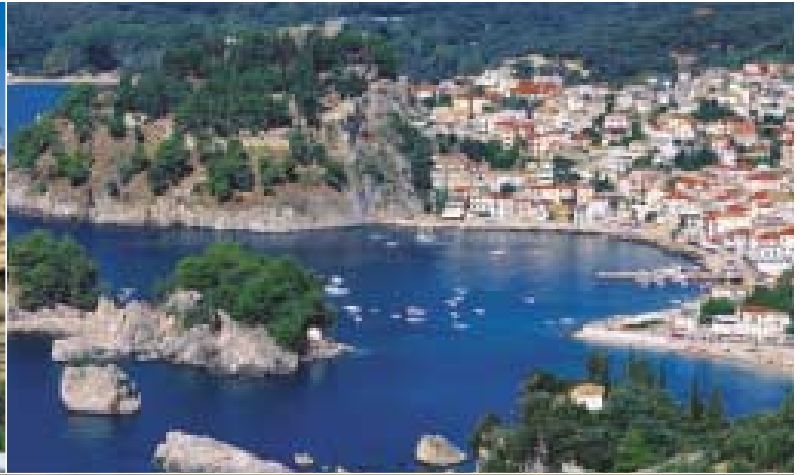
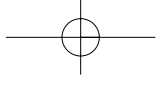


Living

Owning a Honda scooter is about enjoying life. It's like being set free.

Whether cutting through crowded city traffic or gliding through open countryside, you have the freedom to go where you want, to be where you want. The Honda technical advances take scootering to a whole new level, and with some of the most stylish and fashionable scooters in town, you can be what you want, and enjoy mile after mile of unmatched scooter pleasure.





SILVER WING

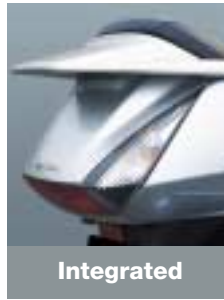
Impeccable style

The Silver Wing is an awe-inspiring 582cc luxury scooter designed to please. Whether you want to commute or cruise, across the city or out of town, the Silver Wing gets you there in style.

Equipped ahead of its class with luxurious levels of comfort, the Silver Wing now comes fitted with Honda's confidence-inspiring and technically advanced Hydraulic Combined integrated brake control system, which makes it much more than just rider friendly.

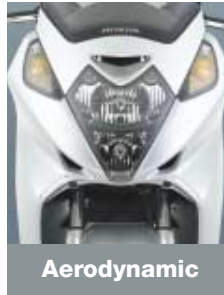
Now available as an ABS version it has all the benefits of the very latest antilock brake system, providing an unparalleled level of braking ease for that extra peace of mind.

Powerful and luxurious - it is a stunning new benchmark in large displacement scooter design.



Integrated

Rear lights and indicators are integrated into the Silver Wing's clean aerodynamic lines.



Aerodynamic

Modern sleek front cowl styling incorporates distinctive 'piggy-back'-style dual multi-reflector headlight.



Responsive

Sturdy, responsive and smoothly compliant 41mm motorcycle-type front fork that will smooth out the road conditions encountered on the streets of Europe.



Force Silver

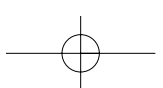
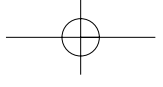


Pearl Great Blue



Storage space





Pantheon

Luxury commuter

Distinctly for the discerning, the stylish all-new Pantheon is the essence of sheer luxury commuting. Busy executives and those seeking the pleasure of real creature comforts will appreciate everything this high quality commuter has to offer.

With all the latest advances in performance and ride quality, this up-to-the-minute Pantheon sets totally new standards for compact small displacement scooters, ensuring its place at the pinnacle of the 125cc scooter class.



Innovative

Long, low and wide, the comfortably contoured seat provides long term riding comfort for rider and passenger.



Dual comfort

Rugged dual-damper rear suspension provides a comfortable reserve of damping control to smooth out the bumps



Smooth ride

The Pantheon's sleekly tapered tail terminates into a cleanly integrated taillight in a distinctive, highly visible display.



Tapered tail



Force Silver

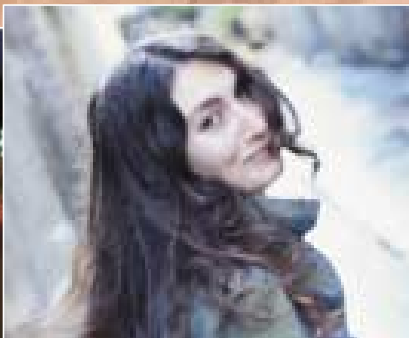
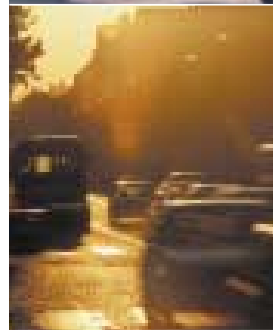


Candy Xenon Blue



Sardegna Green





Dylan 125

A refreshing look

The Dylan 125 injects a dash of fun and excitement into getting around town, with its sporty appeal and elegant city allure. Strong performance and acceleration, plus superb handling and suspension with big 13" scooter wheels let the Dylan 125 take commuting in its stride.



Candy Red



Candy Blue



Silver Metallic



Blue Metallic



The sharply styled headlight is an integral part of the design.

Design



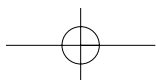
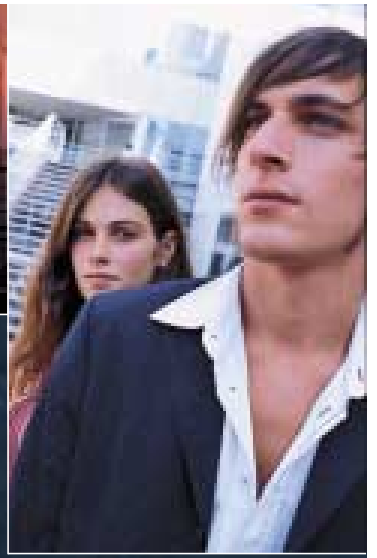
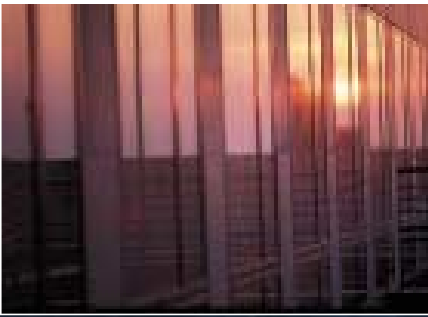
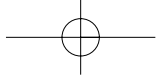
Easy to read instrument panel.

Intelligence



Capacious under seat storage for a full-face helmet.

Storage



SH125

Fashionable commuter

Commute in style with this easy-going, very quiet, traffic buster. Quick and convenient, slim and friendly, the SH125 lets you make the most of city living. With smooth contours and sleek subtle lines, the agile SH125 with 16" wheels has everything you need for a confident, relaxed ride.



Wide throw headlight smoothly integrated into the steering head assembly.

Sleek



Candy Calcutta Red



Rear carrier offers comfortable hand grip for pillion passenger or sturdy mount for top box.

V-Matic



Lockable tilt-up seat conceals a spacious storage compartment.

Spacious storage

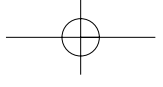


Force Silver



Light Blue





Innova 125



Candy Blue



Red



Silver

Image maker

Sleek and stylish big wheel scooter styling gives the Innova 'the look' to turn heads.

Easy operation and strong yet very economic performance from the clean and quiet 4-stroke engine make this the ideal way to zip through the city or head off to the countryside.

'Big bike' style instrument panel for instant readout of all running conditions.



Impressive



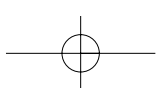
Spacious carrying capacity under the locking tandem seat.

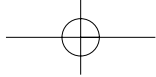


Convenience



Comfort





LEAD

Zippy

The Lead is one of the best value 100cc scooters around. With its curvaceous, 'retro-modern' full-bodied scooter styling, the Lead is designed to zip around town in style. It is economical to run with a clean, quiet and reliable 4-stroke engine that is easy to maintain and meets the strict EURO-2 emission levels.

Compact and stylish instrument panel with easy-recognition dials.



Sturdy

Useful under-seat open face helmet storage space.



Storage



Force Silver



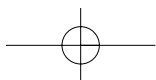
Geny Grey

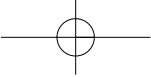


Candy Tahitian Blue



Radiant Red





Sparkling Red



Racy-looking multispoke cast aluminium wheels mount grippy tyres for that look of excitement.



13"



Black



Powerful



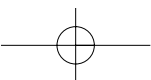
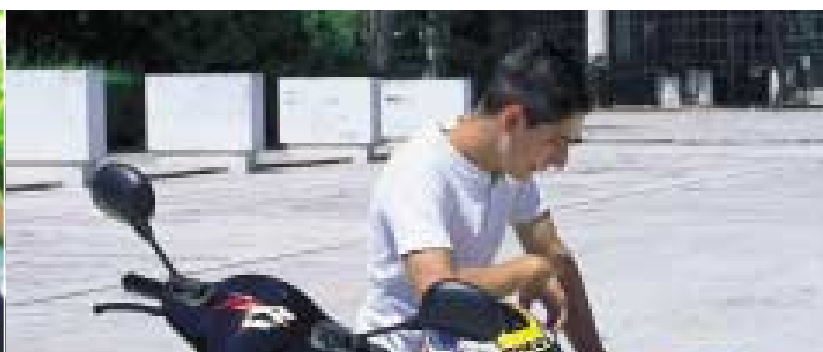
Viking Silver

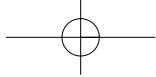


Moon Yellow

Stylishly fast

For a quick-handling blast of riding fun, nothing beats the X8R Super Sport. Its big, bulging 'Kabuki Eye' headlight and wildly styled bodywork, scream out with youthful 'street cred'. And while it is friendly to the environment, the X8R-S has all that's needed to tear up the street with ease.





Powerful

X8R-X

Built to have fun

This little hot rod likes to have fun in the dirt as well as on the street, so break the monotony with a lively dose of riding excitement from the X8R-X. This is a real funky machine with big, 'Kabuki Eye' headlights, aggressively-styled bodywork and wild, colourful graphics.



Kabuki Eye



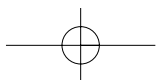
Ultimate Blue Metallic

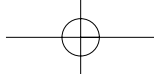


Black / Sparkling Red



Black / Moon Yellow





Reflex Violet

City slicker

Quick and powerful, the SFX 50 has the sleek, sporty and ready-for-fun image ready to deliver a strong dose of urban excitement.

High-styled with a sharp, modern, integrated design, the SFX just oozes with that look of speed and agility - all set to cut through city traffic.



Sporty design



High-styled



3-spoke

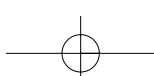
Motorcycle-type front fork and racer-look cast aluminium spoked wheels.

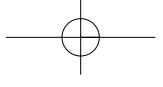


Black



Accurate Silver





Year round performer

Everything about the Honda Sky says 'fun' - from its sleek, 'Neo-Retro' styling to its bold circular patterned design.

The Sky's lightweight construction and swift, nimble performance make it a joy to ride every day of the year. Large 16" wheels ensure easy handling while a tall comfortable seat and wide floorboard offer ample room for riders of all shapes and sizes.



Stopping power



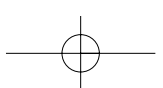
Black



16" Wheels



Easy handling





> S c o o t e r

Honda Scooter Range 2003 Technical specifications

	Silver Wing	Pantheon	Dylan 125	SH125	ANF125 Innova
Engine	Liquid-cooled 4-stroke 8-valve DOHC parallel twin	Liquid-cooled 4-stroke SOHC single	Liquid-cooled 4-stroke OHC single	Liquid-cooled 4-stroke SOHC single	Air-cooled 4-stroke SOHC single
Bore x Stroke	72 x 71.5mm	52.4 x 57.8mm	52.4 x 57.8mm	52.4 x 57.8mm	52.4 x 57.9mm
Displacement	582cm ³	124.6cm ³	125cm ³	125cm ³	124.9cm ³
Compression Ratio	10.2:1	11:1	11:1	11:1	9.3:1
Carburation	PGM-FI electronic fuel injection	PGM-FI electronic fuel injection	26mm VK-type	26mm VK-type	18mm APB-type carburettor
Max. Power Output	37kW/7,000min ⁻¹ (95/1/EC)	10.1kW/9,000min ⁻¹ (95/1/EC)	10.1kW/9,000min ⁻¹ (95/1/EC)	10.1kW/9,000min ⁻¹ (95/1/EC)	6.65kW/7,500min ⁻¹ (95/1/EC)
Max. Torque	54Nm/5,500min ⁻¹ (95/1/EC)	11.7Nm/8,500min ⁻¹ (95/1/EC)	11.3Nm/7,250min ⁻¹ (95/1/EC)	11.5Nm/7,250min ⁻¹ (95/1/EC)	10Nm/5,000min ⁻¹ (95/1/EC)
Ignition	Computer-controlled digital transistorised with electronic advance	Digital transistorised with electronic advance	Digital transistorised with electronic advance	Capacitor Discharge (CDI)	Capacitor Discharge (CDI)
Starter	Electric	Electric	Electric	Electric	Electric/Neutral kick
Transmission	V-Matic	V-Matic	V-Matic	V-Matic	4-speed; rotary
Final Drive	V-belt	V-belt	Belt drive	V-belt	Enclosed roller chain
Length x Width x Height	2,275 x 770 x 1,430mm	2,090 x 735 x 1,460mm	1,940 x 700 x 1,170mm	2,020 x 705 x 1,145mm	1,890 x 727 x 1,083mm
Wheelbase	1,595mm	1,490mm	1,330mm	1,335mm	1,240mm
Seat Height	740mm	770mm	795mm	790mm	768mm
Ground Clearance	140mm	145mm	130mm	148mm	145mm
Fuel Capacity	16 litres (including 3.5-litre reserve)	9.4 litres	9 litres (including 2-litre reserve)	8.3 litres	3.7 litres
Dry Weight	218kg*	139.9kg	120kg	122kg	99.5kg
Wheels	Front 14M/C x MT2.75 4-spoke cast aluminium*	Front 13M/C x MT2.75 cast aluminium alloy	Front 13 x MT2.75 cast aluminium alloy	Front 16 x MT2.50 cast aluminium	Front 17 x 1.40 steel rim/wire spoke
	Rear 13M/C x MT4.50 4-spoke cast aluminium*	Rear 12 x MT3.50 cast aluminium alloy	Rear 13 x MT3.50 cast aluminium alloy	Rear 16 x MT2.75 cast aluminium	Rear 17 x 1.60 steel rim/wire spoke
Tyres	Front 120/80-14M/C 58S	Front 110/90-13M/C 56L	Front 110/90-13 56L (tubeless)	Front 100/80-16 50P (tubeless)	Front 70/100-17M/C 40P
	Rear 150/70-13M/C 64S	Rear 130/70-12 62L	Rear 130/70-13 57L (tubeless)	Rear 120/80-16 60P (tubeless)	Rear 80/90-17M/C 50P
Suspension	Front 41mm telescopic fork, 120mm axle travel	Front 33mm telescopic fork, 85.7mm axle travel	Front 33mm hydraulic telescopic fork, 88mm axle travel	Front 33mm telescopic fork, 89mm axle travel	Front 26mm telescopic fork, 80.5mm axle travel
	Rear Dual conventional dampers with 5-step spring preload adjustment, 120mm axle travel**	Rear Dual damper unit swingarm, 98.1mm axle travel	Rear Dual damper unit swingarm, 75mm axle travel	Rear Dual damper unit swingarm, 70mm axle travel	Rear Single damper unit swingarm, 81.6mm axle travel
Brakes	Front 256 x 5mm single disc with Combined 3-piston calliper and sintered metal pads [†]	Front 240 x 4mm hydraulic disc with Combined three-piston calliper, drilled rotor and sintered metal pads	Front 220mm hydraulic disc with dual-piston calliper and sintered metal pads	Front 220mm hydraulic disc with dual-piston calliper and resin mould pads	Front 220mm hydraulic disc with dual-piston calliper
	Rear 240 x 6mm dual-piston calliper disc and sintered metal pads ^{††}	Rear 220 x 5mm hydraulic disc with single piston calliper, resin mould pads and Combined Brake System	Rear 130mm leading/trailing drum	Rear 130mm leading/trailing drum	Rear 110mm leading/trailing drum

Silver Wing ABS

*230kg

*hollow-section triple-spoke cast aluminium

**115mm axle travel

[†]276 x 6mm hydraulic disc with Combined 3-piston calliper, ABS and sintered metal pads

^{††}240 x 6.5mm hydraulic disc with dual-piston calliper, ABS and sintered metal pads

Ride Safely

Read the owners' manual thoroughly. Always wear a helmet and protective clothing. Get to know your machine and its capabilities. Observe other road users' movements. Obey the laws of the road and respect the environment.



		SCV100 Lead	X8R-S	X8R-X	SFX 50	Sky
Engine		Forced air-cooled 4-stroke	Air-cooled 2-stroke single	Air-cooled 2-stroke single	Air-cooled 2-stroke single	Air-cooled 2-stroke single
Bore x Stroke		350 x 52mm	39 x 41.4mm	39 x 41.4mm	39 x 41.4mm	39 x 41.4mm
Displacement		102.1cm ³	49.4cm ³	49.4cm ³	49cm ³	49cm ³
Compression Ratio		9:1	7:1	7:1	7:1	7:1
Carburation		18mm VK-type carburettor	12mm piston-valve type	12mm piston-valve type	14mm piston-valve type	12mm piston-valve type
Max. Power Output		5.15kW/7,500min ⁻¹ (95/1/EC)	2.8kW/7,000min ⁻¹ (95/1/EC)	2.8kW/7,000min ⁻¹ (95/1/EC)	3.6kW/6,750min ⁻¹ (ISO)	1.4kW/6,000min ⁻¹ (95/1/EC)
Max. Torque		7.50Nm/5,500min ⁻¹ (95/1/EC)	4Nm/46,500min ⁻¹ (95/1/EC)	4Nm/6,500min ⁻¹ (95/1/EC)	4.9Nm/6,500min ⁻¹ (ISO)	2.8Nm/3,500min ⁻¹ (95/1/EC)
Ignition		Capacitor Discharge (CDI)	Capacitor Discharge (CDI)	Capacitor Discharge (CDI)	Capacitor Discharge (CDI)	Capacitor Discharge (CDI)
Starter		Electric/Primary kick	Electric/kick	Electric/kick	Electric/Primary kick	Electric/Primary kick
Transmission		V-Matic belt drive	V-Matic	V-Matic	V-Matic	V-Matic
Final Drive		V-belt	-	-	-	-
Length x Width x Height		1,845 x 710 x 1,110mm	1,875 x 705 x 1,165mm	1,875 x 705 x 1,165mm	1,723 x 636 x 1,064mm	1,860 x 665 x 1,080mm
Wheelbase		1,235mm	1,265mm	1,265mm	1,215mm	1,230mm
Seat Height		765mm	820mm	820mm	755mm	775mm
Ground Clearance		145mm	130mm	130mm	116mm	135mm
Fuel Capacity		4.5 litres	6 litres	6 litres	6 litres	4.5 litres
Dry Weight		100.5kg	91kg	91kg	71kg	72.2kg
Wheels	Front	10 x 2.15 ComCast steel	13 x MT3.00 U-section 6-spoke cast aluminium	12 x MT3.00 U-section 6-spoke cast aluminium	10 x MT2.15 cast aluminium	16 x MT1.50 cast aluminium
	Rear	10 x 2.15 ComCast steel	13 x MT3.75 U-section 5-spoke cast aluminium	12 x MT3.0 U-section 5-spoke cast aluminium	10 x MT2.15 cast aluminium	16 x MT1.85 cast aluminium
Tyres	Front	90/100-10 53J	120/70-13 (tubeless)	120/80-12 (tubeless)	90/90-10 (tubeless)	2.50-16 (tubeless)
	Rear	90/100-10 53J	140/60-13 (tubeless)	120/80-12 (tubeless)	90/90-10 (tubeless)	2.75-16 (tubeless)
Suspension	Front	Oil-damped leading-link, 80mm axle travel	31mm telescopic fork, 90mm axle travel	31mm telescopic fork, 90mm axle travel	27mm telescopic fork, 63mm axle travel	27.2mm grease-damper telescopic fork, 70mm axle travel
	Rear	Single-damper unit swingarm, 71mm axle travel	Unit swingarm, 90mm axle travel	Unit swingarm, 90mm axle travel	Unit swingarm, 68mm axle travel	Unit swingarm, 75mm axle travel
Brakes	Front	130mm leading/trailing drum	220mm hydraulic disc with opposed dual-piston calliper	220mm hydraulic disc with opposed dual-piston calliper and resin mould pads	160mm hydraulic disc with opposed dual-piston calliper and resin mould pads	190mm hydraulic disc with opposed dual-piston calliper and resin mould pads
	Rear	130mm leading/trailing drum with opposed dual-piston calliper	190mm hydraulic disc with opposed dual-piston calliper	190mm hydraulic disc with opposed dual-piston calliper	110mm leading/trailing drum	110mm leading/trailing drum

Please note -
Photographic images of certain models
in this catalogue may be shown with
optional Honda Genuine Accessories.
Please check with your dealer for details.

HONDA
The Power of Dreams



These specification details do not apply to any particular product which is supplied or offered for sale. Manufacturers reserve the right to vary their specifications, including colours, with or without notice and at such times in such manner as they think fit. Major as well as minor changes may be involved. Every effort, however, is made to ensure the accuracy of the particulars contained in this brochure. Consult the dealer with whom your order is placed for details of the specifications of any particular product. This publication shall not constitute in any circumstances whatsoever an offer by the Company to any person. All sales are made by the Distributor or Dealer concerned subject to and with the benefit of the standard Conditions of Sale and Warranty given by the Distributor or Dealer, copies of which may be obtained from him on request. This publicity material applies to the UK only Trade Descriptions Act (1968). Whilst efforts are made to ensure specification accuracy, brochures are prepared and printed several months in advance of distribution and consequently cannot always immediately reflect either changes in specification or in some isolated cases the provision of a particular feature. Customers are always advised to discuss specification details with the supplying Dealer especially if your selection is dependent upon one of the features advertised.

Honda (UK) - Motorcycles

470 London Road, Slough, Berkshire, SL3 8QY
Honda Contact Centre - Telephone: 0845 200 8000
www.honda.co.uk



Printed on Recycled Paper

Part No: MCB03D
Issue Date: 01/03